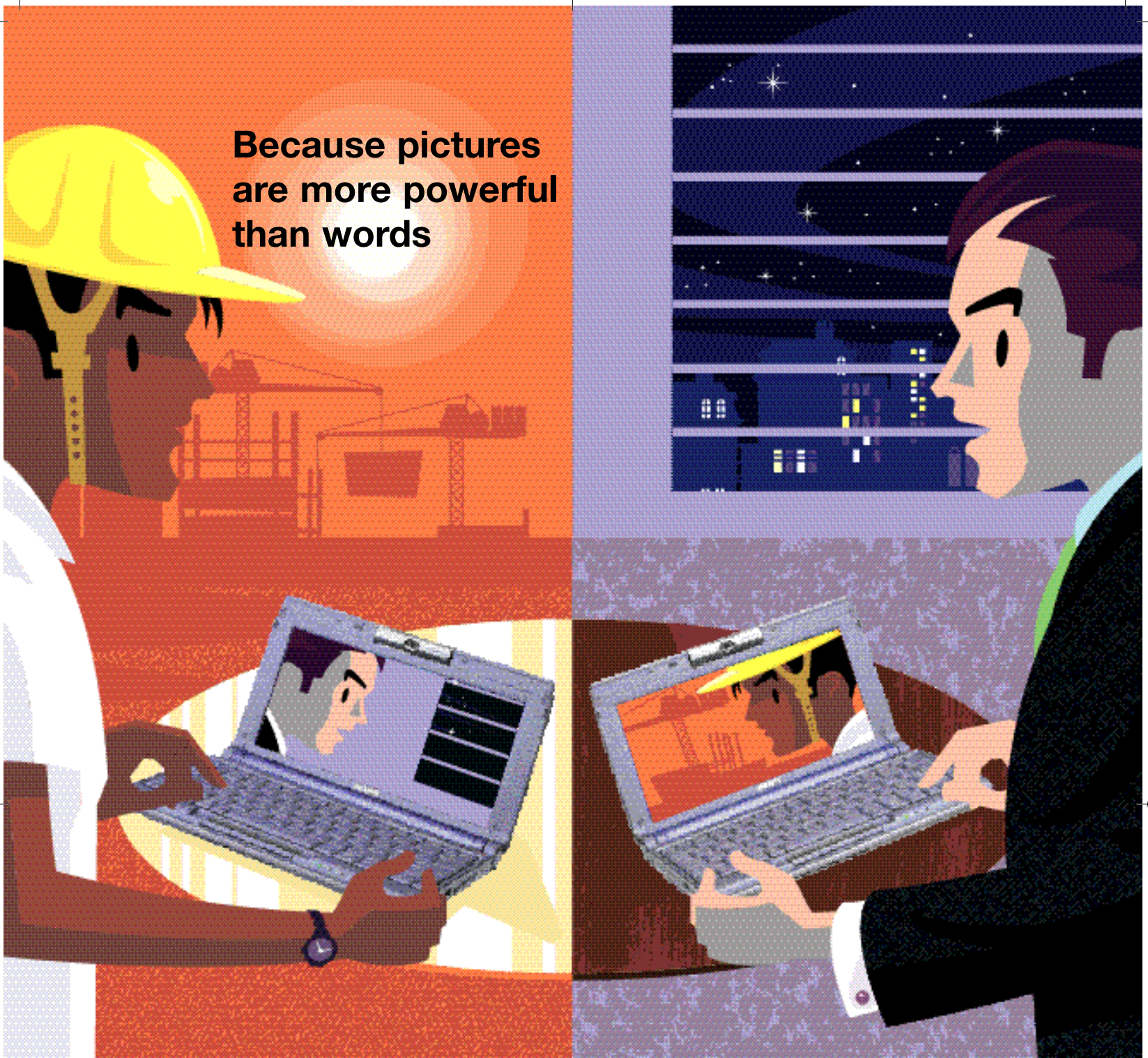


**Because pictures
are more powerful
than words**



PCG-C1VE

Technology that enhances your work and leisure time and the only notebook as innovative and dedicated to performance as you are is the C1VE:

- **Crusoe™ processor**, 12 GB hard disk and 128 MB SDRAM
- **Integral MOTION EYE CCD camera** for still photographs and video
- **Jog Dial** delivers intuitive control of key applications
- **Includes Microsoft® Windows® ME** and weighs only 1 kg, incredibly compact
- **Memory Stick** slot for greater interconnectivity



go direct
sony style



PCG-C1VE



MODEL CODE	PCG-C1VE
MICROPROCESSOR	Crusoe™ processor • PCI Architecture • TM5600 600 MHz
STANDARD MEMORY	128 MB (upgradeable to 192 MB) SDRAM
CACHE MEMORY	256 KB L2 Cache
HARD DRIVE	12 GB
DRIVES	Optional external USB floppy disk drive
DISPLAY	8.95" (22.7 cm) Ultra Wide TFT, UWXGA colour display 1024 x 480 resolution (up to 16 million colours) • Maximum resolution on external display: 1600 x 1200 (256 colours)
GRAPHICS	3D Hardware Acceleration, with 8MB Video RAM • ATI 3D RAGE™ MOBILITY graphic chip • True colour (24 BIT) using XGA mode and graphic accelerator dithering function
MULTIMEDIA	16 bit playback and record • Windows sound system compatible and 3D Audio • Sony MPEG1 Digital Video with full screen play-back • Built-in microphone
INTERFACES	i.LINK (IEEE1394), 400 Mbps • USB • Microphone Jack (for mic in or stereo line in) • Headphone Jack • Monitor port • Memory Stick slot • AV mini Jack (TV Out/ Line Out) • Internal Mic
MODEM	PC Card Modem 56K
KEYBOARD/MOUSE	86 keys • 12 function keys • Windows key and application key • Euro key • 17 mm key pitch • Tracking Stick and 3 button control • Capture key for image capture • Jog Dial
PC CARD SLOTS	1 x Type II PCMCIA: Card Bus support
BUILT-IN 'MOTION EYE' DIGITAL CAMERA	1/6" VGA Progressive scan 350,000 pixels CCD, - f = 2.8 mm F 2.8 Carl Zeiss lens, automatic white balance, automatic exposure, manual focus • Still pictures: CCD CAMERA max. resolution: 640 x 480, 24 bit RGB • Motion pictures: 160 x 120 pixels resolution, 10 frames/s (max 30 frames/s in overlay mode), up to 30 minutes duration
LITHIUM-ION BATTERY	Up to 2.5 hours with standard battery
DIMENSIONS (W x H x D)	248 x 27 x 152 mm
WEIGHT	1 kg (including standard battery)
PRE-INSTALLED SOFTWARE	Sony Software: DVgate (video/still capture) • Media Bar (including MiniDisc editing and audio/video playback) • PictureGear (digital imaging) • Smart Capture (video and still capture) • Movie Shaker (personal movie editing) • PowerPanel (Power Management profile) • Sony Notebook Setup (notebook configuration) • CyberCode Finder (easy find utility) • Camera Control Utility (camera configuration) • Jog Dial Utility (Jog Dial configuration) • VisualFlow (Memory Stick Browser) Other Software: Microsoft® Windows® ME • McAfee VirusScan™ • Acrobat Reader™ • QuickTime™ • Real Player7
SUPPLIED ACCESSORIES	Recovery CD • AC adaptor • Lithium-ion battery • VGA adaptor • Phone Cable • Power Cord
OPTIONAL ACCESSORIES	CD-ROM/RW drive with connection cable and PC card adaptor • AC adaptor • Extended-life lithium-ion batteries • 64 MB expansion memory module • External USB wheel mouse • Communications Cards (LAN, ISDN) • GSM phone connection kits • Carrying cases • External USB floppy drive
GUARANTEE	1 year (extendable to 3 years with VAIO Plus Warranty Pack)

Visit our website: www.sonystyle-europe.com to find out more about the product you are interested in purchasing.



© 2000 Sony Corporation. Sony, i.LINK, MiniDisc, Memory Stick and CyberCode are trademarks of Sony Corporation, Japan. Microsoft and Windows ME are trademarks of Microsoft Corporation. Transmeta and Crusoe are trademarks of Transmeta corporation. All other trademarks are acknowledged. Features and specifications are subject to change without notice. Some notebooks may not be available for all countries. Sony Corporation is not responsible for any errors which may appear in this document.
© Sony ITE-MC, September 2000. C1VE-PCG-141C

Includes Windows ME – the home version of the world's favourite software.

sony style

www.sonystyle-europe.com

You can also call us Monday to Friday
8am to 5pm (local time):

Austria	0179 56 7636
Belgium	02 713 16 32
Denmark	38 322 722
Finland	96 937 9324
France	01 55 6951 24
Germany	069 9508-63 16
Hellas	00800 44 123 194
Italy	02 696 821 03
Ireland	0140 733 39
Luxembourg	034 208084 16
Netherlands	020 346 9521
Norway	23 16 244 4
Portugal	214 154 226
Spain	091 74963 87
Sweden	08 587 704 84
Switzerland	01 800 9288
United Kingdom	020 7365 2943

